

## CAFE + MUSEUM SHOP

Exhibition catalogs and related publications, postcards, Shizuoka City Museum of Art original goods and other items are available for purchase here. At the café next door, visitors may enjoy fragrant coffee, Shizuoka black tea and other items.



### Original Goods

plastic folders / mugs / coloured pencils / masking tape / badges / green tea candies  
 ※Please note that these items may become out of stock.

## A View of the Fifty-Three Stations of the Tokaido

In January 2012, a lacquer work representing a bird's-eye view of the entire Tokaido Road was unveiled in the entrance hall. A large piece, measuring two-by-three meters, it transmits the craft traditions of Shizuoka into the present.



The museum management requests your cooperation with regard to the following items.



Do not touch any of the works on display.



No photography is allowed in the galleries.



In the interests of artwork protection, when in the galleries, please refrain from using any writing implements other than pencils.



Please set mobile phones to silent mode and refrain from use when in the galleries.



No eating or drinking is allowed outside of the café.



Guests may not enter the museum with pets or plants.

### Services

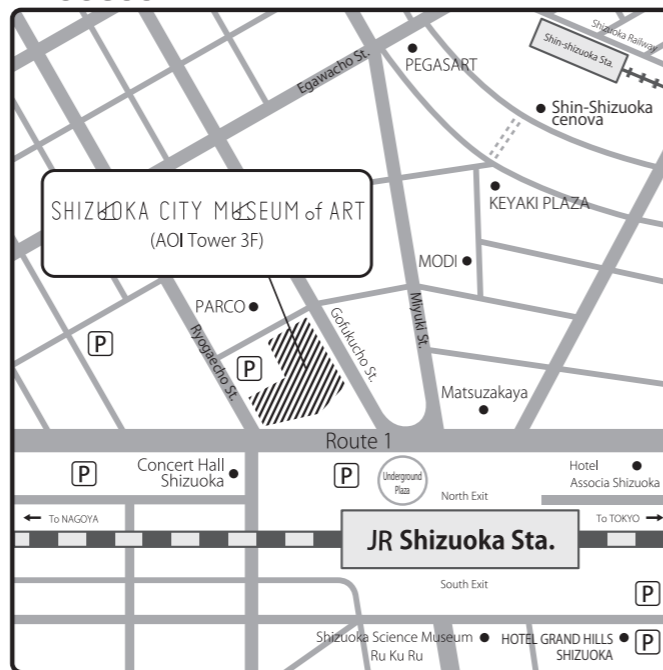


**Coin-operated lockers and umbrella stands:** Require a one-hundred-yen coin, which is returned after use.



**Wheelchairs and baby strollers:** Available free of charge at the front desk.

## Access



### By local train

Three-minute walk from the north exit of JR Shizuoka Station, via underground walkway. Five-minute walk from Shin-Shizuoka Station (Shizuoka Railway).

### By Shinkansen train

From Tokyo Station or Nagoya Station, about one hour on the Tokaido Shinkansen Hikari. From Shin-Osaka Station, about two hours on the Tokaido Shinkansen Hikari.

### By car

About fifteen minutes from Shizuoka Interchange on the Tomei Expressway. (Parking facilities are available nearby for those arriving by car.)

### By air

About one hour from Mt. Fuji Shizuoka Airport on the Shizutetsu Justline bus (Shizuoka Airport Liner).

**Hours:** 10:00 – 19:00 (Entry to galleries until thirty minutes before closing)

Closed on Mondays and during year-end/new-year's holidays (when a national holiday falls on a Monday, closed the following day).

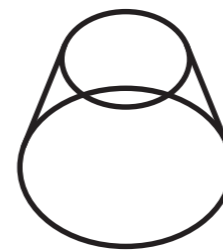
**Entrance fee:** Dependent on the exhibition.

※ Children under middle-school age, and people with disabled person identification booklets (with one assistant, when needed), may enter free of charge.

### Address:

Aoi Tower 3F, 17-1, Koyamachi, Aoi-ku, Shizuoka, 420-0852 JAPAN  
 tel. 054-273-1515 fax. 054-273-1518 www.shizubi.jp

## SCHEDULE 2024-2025



静岡市美術館  
 SHIZUOKA CITY  
 MUSEUM of ART



Shizuoka City Museum of Art opened its doors in May 2010, and is located on the third floor of the Aoi Tower building, at the north exit of JR Shizuoka Station. The museum's guiding principle is "To create and communicate an energetic art and culture of the people and the local region". While maintaining a focus on organizing exhibitions and communication programs, we aim to be an art museum that may serve as a "meeting place in the heart of town".

## Communication Programmes

The entrance hall, where the Museum Shop and Café are located, the multi-purpose room and the workshop room are collectively called the "Communication Zone". Various outreach programs are held here, including presentations and lectures on diverse art scenes, symposiums, concerts, screenings of art films, and workshops. Also, "Museum Classes" – art appreciation sessions for school groups – are coordinated for each exhibition. Please inquire for more information.



Shizubi Project 8: The World is Alive-Koichi Matsufuji photograph: Shunta Inaguchi



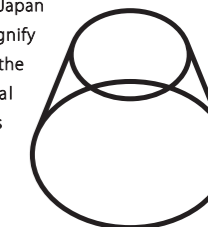
Workshop room (view from the Open Studio day)



Multi-purpose room (view from a lecture event)

## Museum Logo

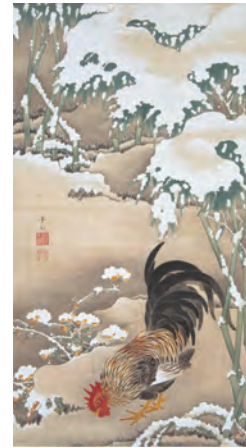
The museum logo features a motif of Mount Fuji, which is a symbol of Shizuoka as well as of Japan as a whole. The two overlapping circles signify widening rings of people gathered around the museum, and represent linking the local region with the world. Furthermore, this logo suggests an "enjoyment of seeing" that may alter our way of seeing through changes in perspective and depth.



## Masterpieces from the Hosomi Collection, Kyoto Rimpa, Jakuchū and *tokimeki* Japanese Art

April 13 (Sat.) — May 26 (Sun.), 2024

The Hosomi Museum in Kyoto is known for its quality collection that overviews the history of Japanese art. Celebrating the 25th anniversary of the establishment of the museum, this exhibition displays 104 carefully selected masterpieces from its collection of approximately 1,000 pieces, including 8 items designated by Japan as Important Cultural Property. Enjoy the world of beauty that has fascinated collectors, from archaeological artefacts of the prehistoric Kofun period, through Buddhist and Shinto artworks from the Heian and Kamakura periods and ink paintings and tea ceremony kettles from the Muromachi period, to tea ceramics and *cloisonné* works from the Momoyama period. The exhibition also features paintings from the Edo period, including depictions of everyday life, *ukiyo-e*, and works of the Rimpa school and pieces by ITŌ Jakuchū which remain highly popular today.



Itō Jakuchū, *Rooster in the Snow*,  
18th century, Hosomi Museum

## Touring Exhibition presenting National Museum of Art, 2024 100 Year Story of Photography Focusing on the Collection of the National Museum of Modern Art, Kyoto

October 4 (Fri.) — November 17 (Sun.), 2024

More than 100 years have passed since Alfred STIEGLITZ, the father of modern photography, worked to establish photography as an art form, but how has photography been developed, viewed and talked about? This exhibition traces the evolution of the diversity of photographic expressions, with approximately 180 works from the end of the 19th century to the present day, mainly from the collection of the National Museum of Modern Art, Kyoto, the pioneering museum in Japan to build a large collection of photographs. Leading photographers of each period are featured, including CARTIER-BRESSON, KIMURA Ihei, Robert CAPA, W. Eugene SMITH, MORIMURA Yasumasa, and Thomas RUFF.



Alfred Stieglitz,  
*The Steerage*, 1907,  
The National Museum  
of Modern Art, Kyoto

## HIRANO Fuzan: Commemorating the 35th Anniversary of His Death Trajectory of Pursuing Coloured Wooden Sculpture Alongside HIRAKUSHI Denchū

June 6 (Thu.) — July 15 (Mon.), 2024

HIRANO Fuzan (1911-89), from present-day Shimizu Ward in Shizuoka City, is one of the most important artists creating coloured wooden sculptures in the history of modern Japanese sculpture. Using carving and colouring techniques he learnt from a doll artist, he produced highly refined works ranging from traditional subjects to contemporary female figures. Fuzan also learnt Western sculpture and was active mainly in the *Nitten [Japan Fine Arts Exhibition]*, the largest art competition in Japan which was originally led by the government. He was trusted by HIRAKUSHI Denchū, a master in wooden sculpture, and coloured many of Denchū's works. This exhibition is the first to explore the full scope of works of HIRANO Fuzan, who, while supporting Denchū as a colouring specialist, traversed 3 domains: dolls in modern Japan, coloured wooden sculpture, and Western sculpture.



Hirano Fuzan, *Hagoromo mai* (Noh play *Hagoromo*),  
1983, Shizuoka City

## Keith Haring: Art to the Streets

November 28 (Thu.), 2024 — January 19 (Sun.), 2025

Keith Haring (1958-1990) has many fans around the world for his bright and pop-infused imagery. With a strong belief that "art is for everybody", he disseminated his work throughout everyday life using the subway and streets based primarily in 1980s New York as a means of conveying a powerful social messages to a chaotic society. This exhibition provides a precious opportunity to experience Haring's diverse forms of expressions over the course of his short 31-year life through approximately 150 pieces, including paintings, prints and drawings, mainly from the collections of the Nakamura Keith Haring Collection.



Keith Haring, *Icons*, 1990, Nakamura Keith Haring Collection  
Keith Haring Artwork ©Keith Haring Foundation

## 400 Years of Western Paintings: Masterpieces from Tokyo Fuji Art Museum

July 26 (Fri.) — September 23 (Mon.), 2024

This exhibition presents about 80 Western paintings, selected from the Tokyo Fuji Art Museum's collection of approximately 30,000 works. Traditionally, religious and mythological paintings were regarded as the noble genre of Western painting, but in the modern era painters' interest shifted to the cultivation of new painting subjects and innovation in formative expressions. The exhibition surveys the 400-year history of Western painting from the 17th to the 20th century, through the masterpieces of popular painters such as MONET, RENOIR, VAN GOGH, and CHAGALL, as well as masters rarely seen in Japan such as TINTORETTO, VAN DYCK, and Claude LORRAIN.



Pierre-Auguste Renoir,  
*Young Woman in Red Dress*,  
c.1892, Tokyo Fuji Art Museum  
©Tokyo Fuji Art Museum  
Image Archives/DNPartcom

## The Magic North: Art from Norway, Sweden and Finland

February 1 (Sat.) — March 26 (Wed.), 2025

From the latter half of the 19th century to the beginning of the 20th century, the Scandinavian countries produced numerous paintings based on their rich natural landscapes, cityscapes, ancient mythology and fairy tales. This exhibition unfolds the history of Norwegian, Swedish and Finnish painting through approximately 70 works from the collections of: Nasjonalmuseet - The National Museum of Norway; Nationalmuseum - Sweden's museum of art and design; and Finnish National Gallery, Ateneum Art Museum. The exhibition welcomes viewers to the magical world of paintings by Nordic artists including Norwegian Edvard MUNCH, who is also well-known in Japan.



Edvard Munch, *Winter on the Fjord*, 1915, Nasjonalmuseet - The National Museum of Norway  
Photo: Nasjonalmuseet/Børre Høstland